



# Honor Society of Nursing

## Alpha Delta Chapter

From the President's Pen:

There are so many good things happening at Alpha Delta that it almost feels awkward to celebrate our accomplishments while our brothers and sisters are hurting from their losses suffered during and after the terrorists' attacks on New York City's World Trade Center. Our hearts go out to all those involved.

Our committees are taking shape, organizing their priorities, and carrying out their charges. We are hopeful that the Fundraising Committee will be instrumental in raising monies for the purchase of a new Alpha Delta poster that can be displayed at Chapter events, Nurses' Week, and at other research and scholarship gatherings. Many thanks to Ruth Marcott and her staff for displaying the new School of Nursing posters for the Alpha Delta Board members to see.

The Membership Involvement Committee is also busy preparing a membership survey, so watch for a mailing or web posting in the near future. This committee has a large task ahead of them and each one of us can help. I am sorry to report that the membership statistics mailed to me from STTI headquarters suggest that only 28% of Alpha Delta's members are active. Let's all work together to locate inactive members, encourage those who have let their memberships lapse to get going and renew, and respond to the membership survey when asked to!

The Program Committee will be making arrangements for all special meetings and events listed in the Chapter calendar that is published in this issue. Please mark your own calendars accordingly so you can plan to participate in Alpha Delta this year. Remember, bring a friend, colleague, or potential community member with you and introduce them to our wonderful organization.

All the Committees of Alpha Delta, 2001-2002, are listed in this newsletter issue. There is always room for more members to participate, so please volunteer by contacting any officer of the board listed in this newsletter or any current member of any committee. Remember, belonging to STTI is an honor that comes with a duty to participate in the name of excellence. We offer recognition of accomplishments, awards, research grants, networking and mentoring opportunities locally and internationally. This year, two of our members will represent Alpha Delta as delegates to Convention. Charlotte Wisnewski and Jane Gonzalez will carry out very important duties on our behalf while in Indianapolis in November. Ruth Marcott is on the STTI ballot for a position on the International Nominating Committee. Congratulations and good luck Ruth.

In addition to news about delegates to convention and the International ballot, I want to thank both Bets Anderson and Kay Sandor for their exquisite contributions to the Silent Auction that will take place during convention. Bets and Kay each donated their time and talent in the forms of original framed watercolors. Bets' "Lone Laughing Gull" and Kay's "Gulf Coast Azaleas" will be lasting impressions of Galveston and UTMB's Alpha Delta Chapter for lifetimes to come. Proceeds of the Silent Auction support nursing research.

Nonie Mendias has been working for quite some time on getting our Chapter's history recorded and ready for posting on our new website. Trish Richard and Nonie have collaborated about our needs and I'm happy to report that Trish has us all set up and ready to roll. Go right now and check it out! [http://www.son.utmb.edu/STTI\\_Alpha\\_Delta](http://www.son.utmb.edu/STTI_Alpha_Delta)

We are all so very grateful to Dean Mary V. Fenton for her years of guidance and generosity. Our office space is magnificent and we will never forget all she has done to make Alpha Delta a vital chapter of STTI. Soon we will be welcoming Dr. Pamela Watson who will carry on the leadership of the School. We wish both Deans well and recognize Bets Anderson for the important role she is carrying out in steering us through the transition.



*Judy*

<b>ALPHA DELTA OFFICERS 2001-2002</b>		
<b>President / Judith Drew</b> (409) 772-8227 jdraw@utmb.edu	<b>President-Elect / Judy Glaister</b> (409) 772-8229 juglaist@utmb.edu	<b>Vice-President / Linda J. Venzke</b> (409) 770-6751 lvenzke@utmb.edu
<b>Immediate Past President/Cheryl Lehman</b> (409) 772-1071 clehman@utmb.edu	<b>Corresponding Secretary / Nonie Mendias</b> (409) 772-8258 nmendias@utmb.edu	<b>Recording Secretary / Michelle Clark</b> (409) 772-8237 mclark@utmb.edu
<b>Treasurer / Cheryl Day</b> (713) 791-7395 cheryl.day@hcahealthcare.com	<b>Archivist / Joan Hayes</b> (409) 747-2003 jmhayes@utmb.edu	<b>Bylaws Consultant / Anna Pearl Rains</b> (409) 772-1762 arains@utmb.edu
<b>Jane Gonzales</b> (409) 772-7507 jgonzal@utmb.edu	<i>Nominating Committee:</i>	
<b>Karen Hand</b> (409) 772-0396 khand@utmb.edu	<b>Ruth Marcott</b> (409) 772-8225 ermarcot@utmb.edu	<b>Newsletter / Kathy Lawrence</b> (409) 772-6337 kalawren@utmb.edu
	<b>Dolly Sanares-Ousley</b> (409) 747-7363 dcsanare@utmb.edu	<b>Administrative Support / Susie Briones</b> (409) 772-8317 sbriones@utmb.edu
	<b>Charlotte Wisnewski</b> (409) 772-8235 cwisnew@utmb.edu	



## Member Highlights

### Congratulations to STTI/Alpha Delta Chapter Members on their publications.

Froman, R. D. (2001). Elements to consider in planning the use of factor analysis. *Southern Online Journal of Nursing Research*, 2.

Gauthier, D. M., & Froman, R. D. (2001). Preferences for care near the end of life: Scale development and validation. *Research in Nursing & Health*, 24, 298-306.

Glaister, J. A. (2001). Healing: Analysis of the concept. *International Journal of Nursing Practice*, 7, 63-68.

Glaister, J. & Abel, E. (2001). Experiences of women healing from childhood sexual abuse. *Archives of Psychiatric Nursing*, 25, 188-194.

Lehman, C. A., & Owens, S. V. (2001). Bladder scanner accuracy during everyday use on an acute rehabilitation unit. *SCI Nursing*, 18, 89-92.

Lehna, C. (2001). Fathers' and siblings' care actions for children in home hospice care. *Journal of Hospice & Palliative Nursing*, 3 (1), 17-23.

Lehna, C., & Tholcken, M. (2001). Using visual inquiry to reveal differences in nursing students' perception of case management. *Pediatric Nursing*, 27, 403-409.

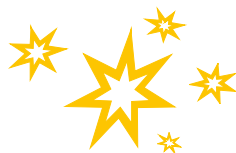
Mendias, E. P., Clark, M. C., & Guevara, E. B. (2001). Women's self-perception and self care practice: Implications for health care delivery. *Health Care for Women International*, 22, 299-312.

Morris, D. L., Silva, C., & Hanley, M. A. (2001). Subtle Energy Modalities in Primary Care: Part 2. *The Clinical Letter for Nurse Practitioners*, 5 (4), 5-8.

Rounds, L. (2001). A North American perspective on clinical supervision. In J. Cutcliffe, T. Butterworth, & B. Proctor (Eds.), *Fundamental themes in clinical supervision* (pp. 303-315). London: Routledge.

Wisnewski, C. A. (2001). [Commentary on the article Preventing recurrent upper gastrointestinal bleeding in patients with *Helicobacter Pylori* infection who are taking low-dose aspirin or Naproxen by F. K. L. Chan, et al.]. *APNSCAN*, 41, 28.

Congratulations!



## Thank You!

Appreciation goes to Kay Sandor for her "Gulf Coast Azaleas" and Bets Anderson for her "Lone Laughing Gull". Both contributions of original watercolors will go to the Silent Auction at our upcoming convention in November. Thanks also go to Ruth Marcott for soliciting our artists in residence.

Thanks to our Archivist, Joan Hayes, for so thoughtfully sorting through and organizing Alpha Delta's history.

Jane Gonzalez and Charlotte Wisnewski will be attending our November convention as delegates in Indianapolis.

Ruth Marcott is on the ballot for a position on the International Nominating Committee. We wish you good luck! Ruth already serves on the International Eligibility Committee.



### Mark Your Calendars!

You won't want to miss any Alpha Delta events that are coming up this year. Here is a preliminary calendar you can use to make sure you join us each and every time.

**Networking and scholarship are at the center of our work together!**

- ▶ October: Call Goes Out for Research Proposals Due March 1, 2002.
- ▶ November 12<sup>th</sup>: Orientation & Eligibility Tea, 4:30-6:00 PM. Watch our website for details!
- ▶ November 19<sup>th</sup>: Alpha Delta Business & Membership Meeting, 12-1.
- ▶ January 11<sup>th</sup> & 12<sup>th</sup>: 2002 Southern States Knowledge Conference.
- ▶ Early February: Official Call for Nominations for Officers of the Board Be thinking now!
- ▶ March 1<sup>st</sup>: Deadline for Research Proposal Submissions
- ▶ March 15<sup>th</sup>: Nominations for Awards deadline.
- ▶ Mid-March: Ballots to the Membership for Voting (Officers of the Board).
- ▶ March 22<sup>nd</sup>: SON Homecoming.
- ▶ April 26<sup>th</sup>: Induction of New Alpha Delta Members and New Officer Installations.
- ▶ Early May: Alpha Delta Participates in Nurses' Week at UTMB.
- ▶ May 20<sup>th</sup>: Alpha Delta's Scholarship Program.
- ▶ July 22<sup>nd</sup>: New and Old Board Transition Meeting.
- ▶ August 1<sup>st</sup>: All Chapter Reports due to headquarters.
- ▶ Mid-August: QUEST at UTMB: Alpha Delta participates with Poster and Bookstore Gift Certificate.

To include any news in the newsletter/website please contact:  
Trish Richard@ 772-8221 or [plrichar@utmb.edu](mailto:plrichar@utmb.edu)  
Kathy Lawrence @ 772-6337 or [kalawren@utmb.edu](mailto:kalawren@utmb.edu)

## Did you know?

*Sigma Theta Tau International has an official anthem?*

### **"We Stand on Truthful Visions"**

Words and Music by David Ott

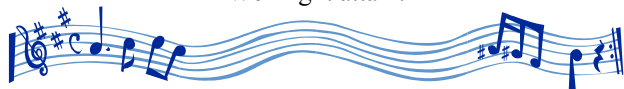


From humble past, in virtue case,  
Our society of honor inspired.  
With values pure, commitment sure,  
To these merits we aspire.

To Sigma Theta Tau we pledge with reverent awe,  
To stand on truthful visions,  
That you so long foresaw:  
Rich knowledge pursued and with true values imbued,  
We commit to excellence and seek to scholarship gain,  
So that a higher plane  
We might attain.

Firm now we stand on this great command,  
That ours is to care to share through the night.  
With values pure, commitment sure,  
We are facets of light.

To Sigma Theta Tau we pledge with reverent awe,  
To stand on truthful visions,  
That you so long foresaw:  
Rich knowledge pursued and with true values imbued,  
We commit to excellence and seek to scholarship gain,  
So that a higher plane  
We might attain.



## Alpha Delta Committees 2001-2002



**Membership Involvement:** Judy Glaister, Jane Gonzalez, Ellarene Duis-Nittsche, & Mary Murphy.

**Finance Committee:** Bruce Leonard (Chairperson), Corinne Opperman, Cheryl Day, & Dana Bjarnason.

**Nominating Committee:** Ruth Marcott (Chairperson), Dolly Sanares, & Charlotte Wisnewski.

**Eligibility Committee:** Jane Gonzalez (Chairperson & Counselor), Karen Hand (Counselor), Maribel Bhojani, Jan Kvale, & Dana Bjarnason.

**Research Committee:** Diane Heliker (Chairperson), Trish Richard, & Ellarene Duis-Nittsche.

**\*Awards Committee:** Charlotte Wisnewski & Diane Heliker (co-chairs), Denise Voyles, & Missy Torres.

**Fundraising Committee:** Karen Hand (Chairperson), Missy Torres, Rebakah Richard, & D'nae Weaver.

**Newsletter and Publicity Committee:** Kathy Lawrence (Chairperson), Nonie Mendias, & Michele Clark.

**Program Committee:** Linda Venzke (Chairperson), Helen Jordan.

**\*The Awards Committee of Alpha Delta Chapter would like the membership to begin thinking of nominating outstanding members for the following awards: *Excellence in Research, Excellence in Education, Excellence in Practice, and Excellence in Mentoring.* The latter award is a new award, which has been recommended by the committee and agreed to by the Board of Directors. Although nominations are not due until 2002, now is the time to consider whom you would like to nominate and gather the necessary supporting documentation. If you have any questions, please contact one of the co-Chairs, Charlotte Wisnewski, Ph.D., R.N.,C. (409-772-8235) or Diane Heliker, Ph.D., R.N. (409-772-1486).**

## Hear Ye! Hear Ye!



**Calling all volunteers for  
Dickens on the Strand!**  
December 1<sup>st</sup> & 2<sup>nd</sup>, 9:00am – 9:00pm.

Alpha Delta is participating again this year and needs volunteers. Wear a Victorian costume and admission is free. We have two events to fill with two-hour shifts: the First Aid Station and a Refreshment Booth.

Contact the people below for fun-filled details:

First Aid: Cheryl Lehman @772-1071

Refreshment Booth: Caroline Dorsett @772-1849



### **Call for Research Proposals!**

The Nursing Research Committee of Alpha Delta Chapter is calling for submission of research proposals for two Research Grant Awards (\$750.00 each).

Proposal Submission Guidelines

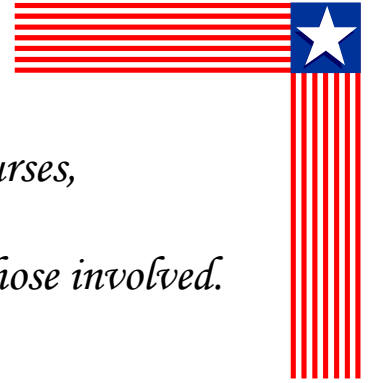
Grant application and proposal deadline: March 1, 2002

*The purpose of this award is to encourage research by qualified nurses and/or nursing students who are learning to conduct research to advance knowledge in the area of nursing science.*

Forms may be viewed on our website @

[http://www.son.utmb.edu/STTI\\_Alpha\\_Delta](http://www.son.utmb.edu/STTI_Alpha_Delta)

Contact Diane Heliker @772-1486 for more information.



*America, including some of our fellow nurses,  
has suffered a tragic loss.  
Alpha Delta members extend our sympathies to those involved.  
Our hearts go out to all people.*



*Sigma Theta Tau, the International Honor Society of Nursing, is an educational force which has opportunities and responsibilities to make definite contributions to schools of Nursing, to the Profession, and to the Public.*

*Its purposes are to:*



- recognize superior achievement*
- recognize the development of leadership qualities*
- foster high professional standards*
- encourage creative work*
- strengthen commitment to the ideals and purposes of the profession*



*Sigma Theta Tau International  
Alpha Delta Chapter  
The University of Texas School of Nursing at Galveston  
301 University Boulevard  
Galveston, TX 77555-1029*